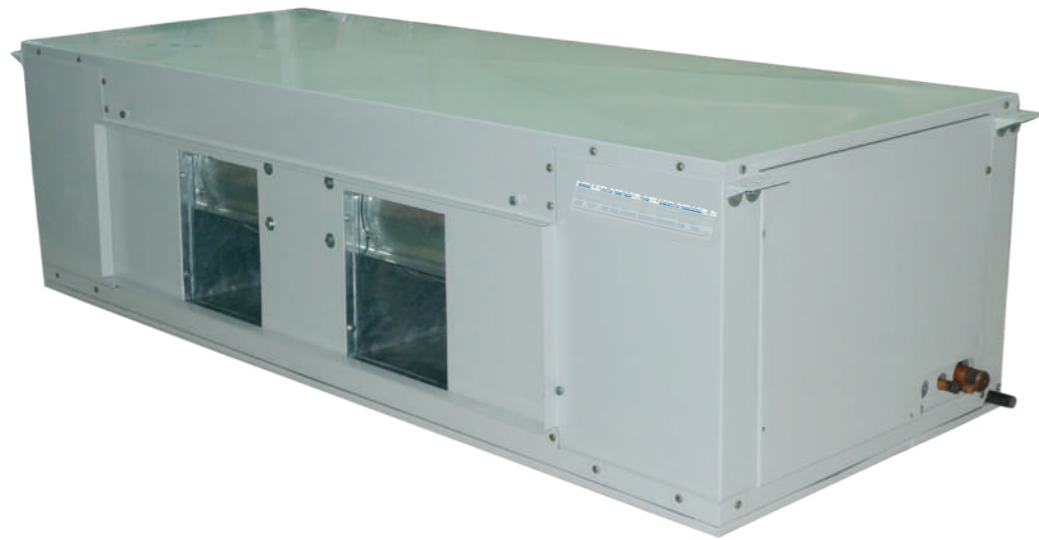


# MODEL MFHDC

## HIGH STATIC (150 Pa External Static) DUCTED FAN COIL UNIT, FOR DIRECT EXPANION SYSTEM AND CHILLED WATER SYSTEM CAPACITY RANGE FROM 80,000 TO 150,000 BTU/H (23.45 kW - 43.96 kW)



## FEATURES

- Easy to maintenance.
  - Casing opens from left, right, and bottom of the unit
  - Drain pan, blower set, and evaporator coil easily pulled out from bottom to maintenance
- Modern SLIM design with low unit height
  - 470 mm for model 70-90
  - 575 mm for model 100-120
  - 630 mm for model 150
- 150 Pa External static pressure with direct-drive motor ( 3-speed taped )
- Durable construction
- Supplied with air filters

## DESCRIPTION :

- MFHDC ducted fan coil unit are suitable for ceiling duct mounted
- Draw Thru type with return air plenum
- Direct expansion

## TECHNICAL SPECIFICATION

The unit with plenum is fabricated from electro-zinc coated steel sheet. The cabinet is finished in white powder coating for protection against rust. The exterior panels are insulated with 10 mm. thick polyethylene foam. The insulation is affixed to the casing with the water proof adhesive.

## DX COIL

The coil consists of full face coil with counterflow circuits, seamless staggered copper tubes mechanically bonded into aluminium fins. Each coil is degreased internally and externally, brazed in nitrogen atmosphere, leak tested at 350 psig and completely dehydrated before assembly

## BLOWER

The blower is the double inlet, forward curved centrifugal type and statically and dynamically balanced.

## MOTOR

3 - Speed - Direct drive

## FILTERS

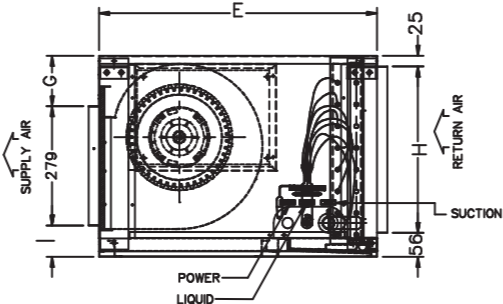
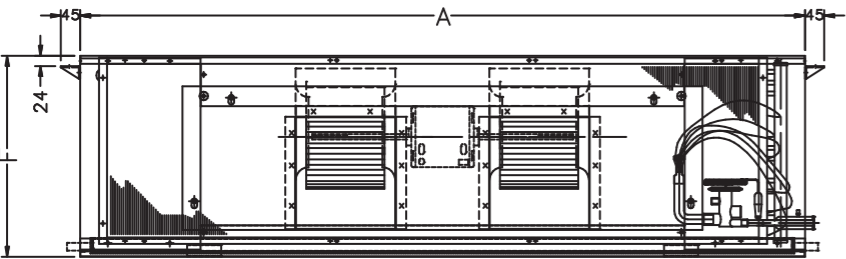
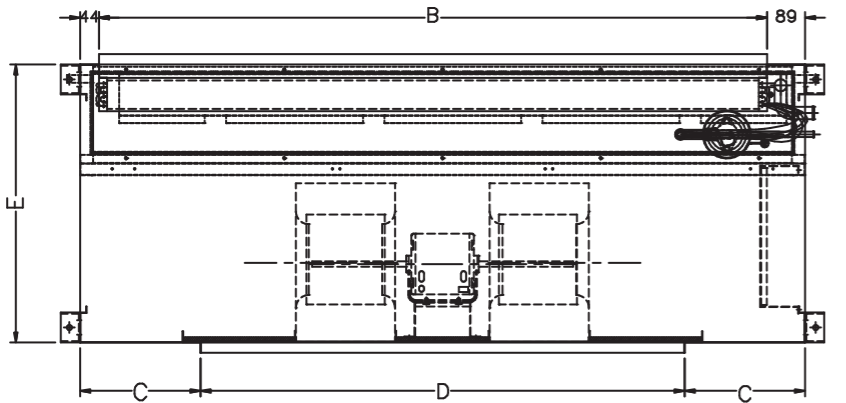
Air filters are nylon filter type.

## CONDENSATION REMOVAL

Drip pan with water - repellent type insulation to ensure positive removal of all condensation and prevent condensation on the underside of the drip pan. The unit shall have double drain tray with separate drain connection.

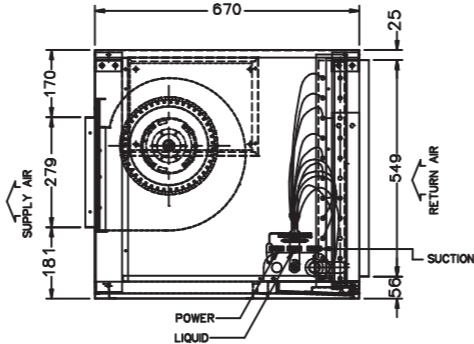
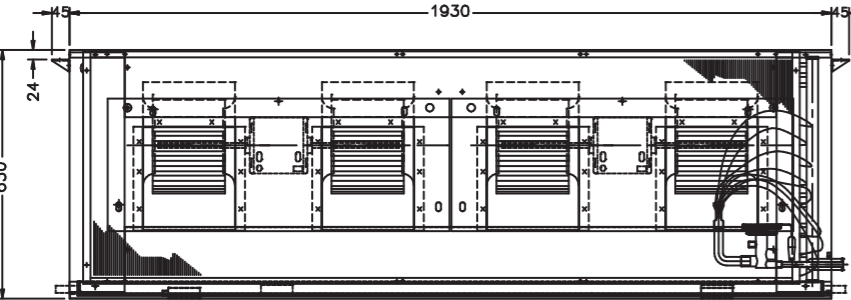
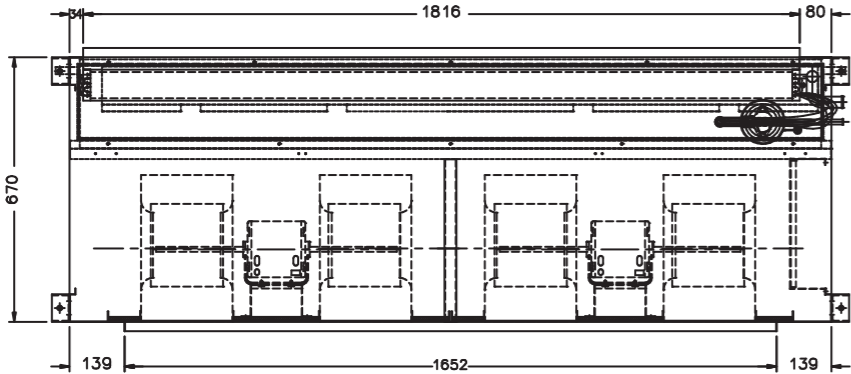
DIMENSIONAL DRAWINGS

MFHDC 70-120, 70W-120W



MFHDC-70,70W	1695	1562	281.5	1132	650	470	118	389	73
MFHDC-90,90W					670	575	164	494	132
MFHDC-100,100W					670	575	164	494	132
MFHDC-120,120W	1820	1687	344						
MODEL	A	B	C	D	E	F	G	H	I

MFHDC 150,150W



PHYSICAL DATA & ELECTRICAL DATA

MODEL FAN COIL UNIT		MODEL	MFHDC					
		DX. COIL	70	90	100	120	150	
		WATER COIL	70W	90W	100W	120W	150W	
COOLING CAPACITY		BTUH	80,000	90,000	100,000	120,000	150,000	
		KW	23.45	26.38	29.31	35.17	43.96	
AIR FLOW RATE	WATER COIL	CFM	2,300	3,000	3,300	4,000	5,000	
WATER FLOW RATE		GPM	16.0	18.0	20.0	24.0	30.0	
FAN COIL UNIT		TYPE	DUCTED TYPE					
FAN BLOWER		TYPE	MULTI BLADE CENTRIFUGAL FAN					
		QUANTITY	2				4	
		ESP (Pa)	150					
		MOTOR 3 SPEED	QUANTITY	1				2
			OUTPUT WATT	680	800	680	800	680
		POWER SUPPLY	V/Ph/Hz	220/1/50				
COOLING COIL	FACE AREA	ft <sup>2</sup>	6.22		8.61		10.08	
	DX. COIL	TYPE	ALUMINIUM LOUVER FIN WITH COPPER TUBE					
			ROW	3				
THERMOSTAT		TYPE	OPTIONAL					
AIR FILTER		TYPE	NYLON FILTER					
CONNECTIONS	DX. COIL	SUCTION IN. OD	1-1/8		1-3/8			
		LIQUID IN. OD	5/8				7/8	
	WATER COIL	WATER IN/OUT IN. OD	1-1/8		1-1/2			
		DRAIN IN. OD		3/4				
DIMENSION	HIGHT	mm.	470		575		630	
	WIDTH	mm.	1695		1820		1930	
	DEPTH	mm.	650		670		670	
APPROXLMATE WEIGHT		Kgs.	78	82	100	105	137	

\* Based on 80 F and 67 F Wb Air Entering Coil. 95 F and 75 F Wb Ambient Temp.

Option : Free blow supply air grille

